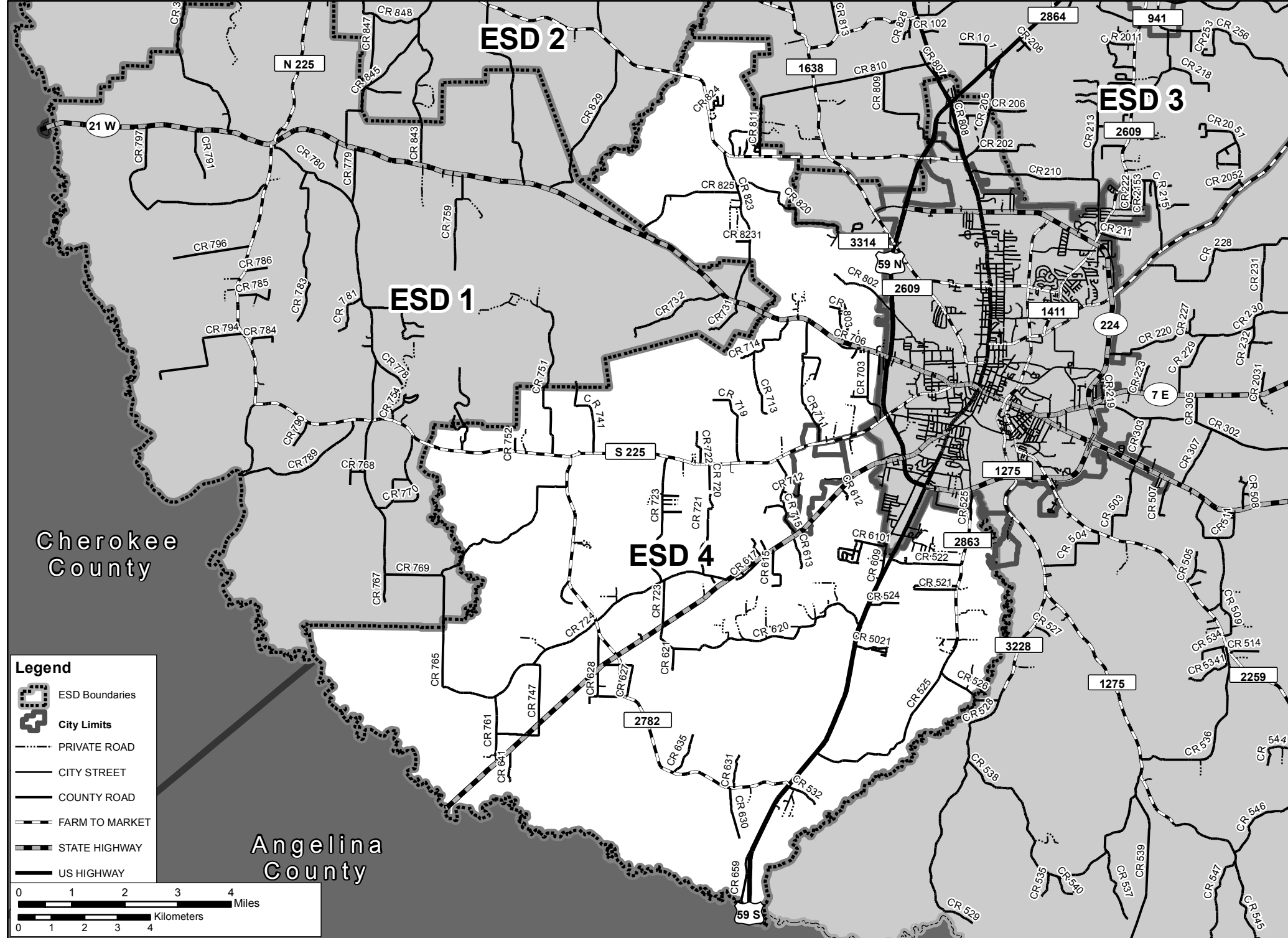
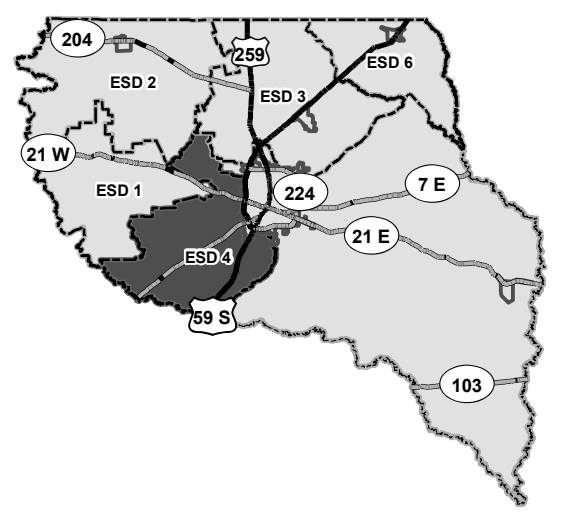


NACOGDOCHES COUNTY

EMERGENCY SERVICE DISTRICT # 4

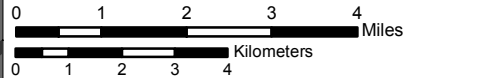


Cherokee County

Angelina County

Legend

- ESD Boundaries
- City Limits
- PRIVATE ROAD
- CITY STREET
- COUNTY ROAD
- FARM TO MARKET
- STATE HIGHWAY
- US HIGHWAY



This product is for informational purposes and may not have been prepared for or be suitable for legal, engineering, or surveying purposes. It does not represent an on-the-ground survey and represents only the approximate relative location of property boundaries. This information is provided by the Nacogdoches County 911 Addressing Coordinator with the information available in the Nacogdoches County 911 Addressing database. This data, however, is provided without guarantee of accuracy of data. It is not intended to imply property ownership. It is not intended to imply legal or contractual obligations in any respect; it is not an express or implied warranty.

Data Sources:
 City of Nacogdoches, Engineering Department
 Nacogdoches County GIS & 911 Addressing
 Nacogdoches County Voting Department

Map Produced by Nacogdoches County
 John Streeb, Coordinator
 GIS & 911 Addressing Office
 Created and Last Updated 09/14/2015

For comments or questions please contact:
 GIS & 911 ADDRESSING
 203 W MAIN ST STE 105
 NACOGDOCHES TX 75961
 (936) 560-0658
 Fax: (936) 564-0477

